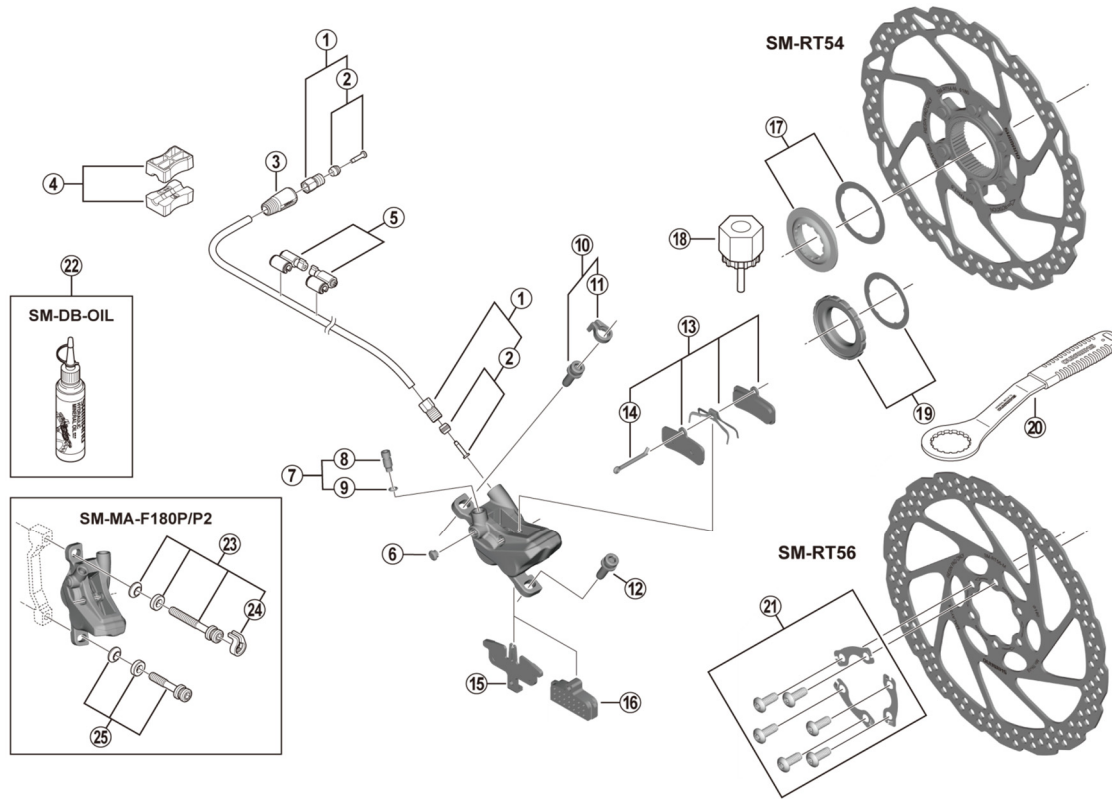


Disc Brake
BR-MT420 Brake Caliper
SM-BH90-SS Brake Hose

SM-RT54 Disc Rotor/Center Lock
SM-RT56 Disc Rotor/6-Bolt



BR-MT400

ITEM NO.	SHIMANO CODE NO.	DESCRIPTION	INTERCHANGEABILITY	
1	Y8KH98010	Flare nut unit	A	
2	Y8JA98020	Olive and connector insert		
3	Y8WM14000	Cover	A	
4	Y8H198030	TL-BH61 Shimano original tool (2 pcs.)	A	
5	Y83098040	SM-HANG Hose supporter A and B	A	
6	Y88F06000	Bleed boss cap	A	
7	Y8LS98030	Banjo screw and O-ring	A	
8	Y8VZ07000	Banjo screw	A	
9	Y8B511001	O-ring	A	
10	Y2F398020	Caliper fixing screw (M6 x 18.7) and snap ring	A	
11	Y2RT06000	Snap ring	A	
12	Y8C509020	Caliper fixing screw (M6 x 18.7)	A	
*	EBPD03SRXA	D03S Resin pad and spring with split pin (pair)		
	Y1XM98010			
*	EBPD03SRXBS	D03S Resin pad and spring with split pin (25 pairs)		
	Y1XM98011			
14	Y8DB06100	Split pin	A	
15	Y1Y003000	Pad spacer		
16	Y8FF19000	Bleeding spacer		
17	Y8KU98010	Lock ring (black) and washer	A	
18	Y12009230	TL-LR15 Lock ring removal tool	A	
19	Y24698030	Lock ring and washer (external spline type)	A	
20	Y13098000	TL-FC36 Lock ring removal tool	A	
21	Y8KT98010	Rotor fixing screw and lock washer	A	
22	Y83998020	Mineral oil (100 ml)	A	
	Y83998030	Mineral oil (500 ml)	A	
23	Y2RT98020	Caliper fixing screw unit (M6 x 37.9)	A	
24	Y2RT07000	Snap ring	A	
25	Y8G498030	Caliper fixing screw unit (M6 x 32.1)	A	

A: Same parts.

B: Parts are usable, but differ in materials, appearance, finish, size, etc.

Absence of mark indicates non-interchangeability.

Specifications are subject to change without notice.

Jul.-2022-4544C

© Shimano Inc. I

SHIMANO